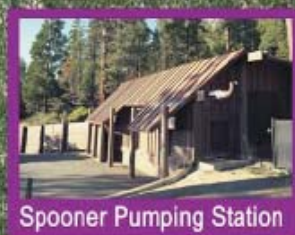
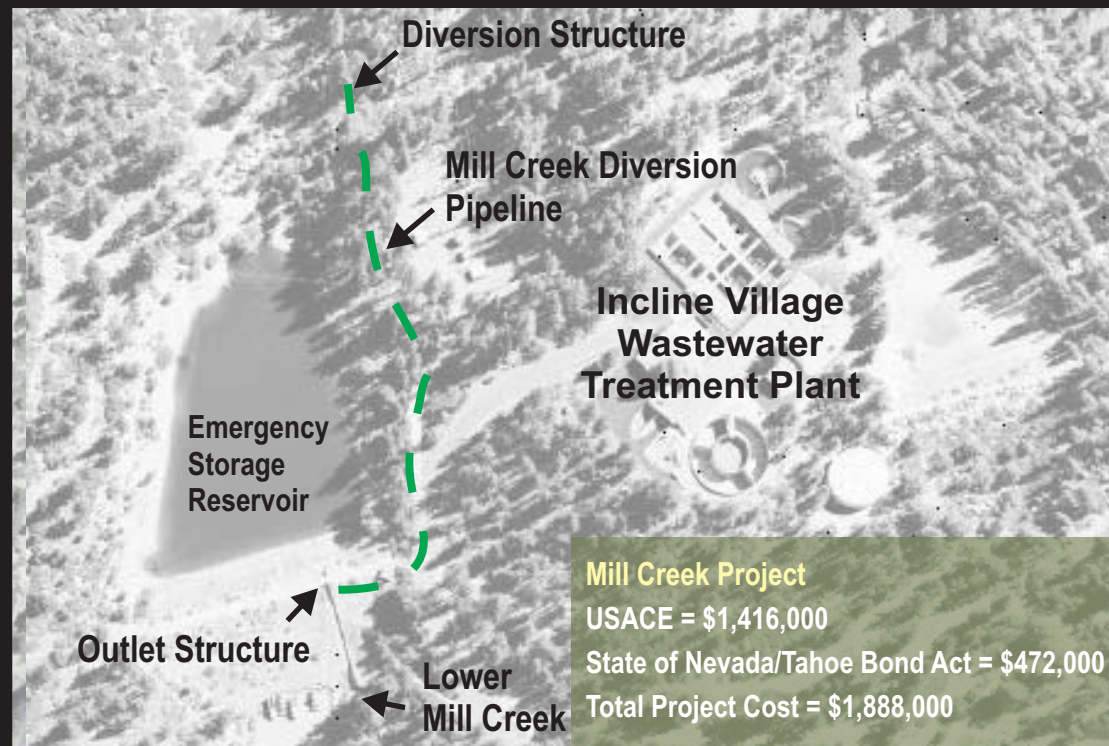


IVGID. Protecting the Basin's
Resources Today, for Tommorrow

Section 108 - Project Features



Spooner Pumping Station



16-Inch Pipe Sample



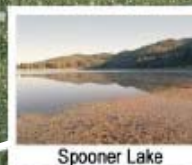
Wetland Discharge Site



Wetland Discharge Site



A/C Pipe Found in Good Condition



Spooner Lake



Leaking Joint East of Spooner Lake

Section 595 - Project Features

IVGID is working in cooperation with the U.S. Army Corps of Engineers to solve potential environmental challenges

Phase One: Environmental Documentation and Predesign Efforts

| | |
|---|--------------------|
| Current Funding: | |
| IVGID Ratepayers..... | \$312,500 |
| U.S. Water Resources Development Act..... | \$937,500 |
| TOTAL..... | \$1,250,000 |

Phase Two: Construction of Improvements

| | |
|---|---------------------|
| IVGID..... | \$4,257,500 |
| U.S. Army Corps of Engineers (USACE)..... | \$13,972,500 |
| Nevada State Parks..... | \$400,000 |
| TOTAL..... | \$18,630,000 |

Pipeline Repair & Replacement Schedule (\$ in millions)

| Project | Prior to FY 2009 | FY 2009 | FY 2010 |
|---|---------------------|-------------|-------------|
| Segment 1 - 18,000 LF of Pipeline Replacement | 8.60 | 3.10 | |
| Segment 2 - 100 LF of Pipeline Replacement | 0.03 | | |
| Segment 3 - 10,905 LF of Pipeline Replacement | 3.90 | | |
| Segment 5 - 1,100 LF of Pipeline Replacement | | 0.30 | |
| State Parks and Burnt Cedar Chemical Feed Project | 1.50 | | |
| Spooner Pumping Station | | | 1.20 |
| Total | 14.03 | 3.40 | 1.20 |

Grand Total = \$18.63 million

Existing Pipe to Remain in Service

PROJECT FACTS and GOALS

Project Facts

- 20-mile pipeline transports treated wastewater out of Lake Tahoe Basin
- Pipeline crosses over Spooner Summit from Incline Village to a wetlands disposal site in Carson Valley
- 36 years continuous use has deteriorated pipeline, causing leaks in environmentally-sensitive areas

Project Goals

- Repair damaged pipe, realign the pipeline located around environmentally-sensitive Spooner Lake State Park
- Replace Segment 1 pipeline to increase system reliability
- Improve effluent storage and pumping facilities at Wastewater Treatment Plant and Spooner Pump Station
- Restore flow in Lower Mill Creek

PROJECT TEAM



Incline Village
General Improvement District

U.S. Army Corps of Engineers



HDR Engineering, Inc.

Tahoe Regional Planning Agency



Nevada Department of Transportation

State of Nevada



Incline Village General
Improvement District, Nevada

Wastewater Effluent
Export Facilities and
Pipeline Repair &
Replacement Project

Plans in the Pipeline
to Improve the
Environmental Quality
of the Lake Tahoe Basin